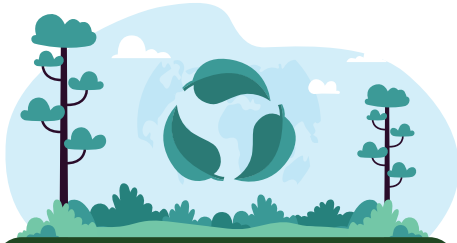


# DOUBLE MATERIALITY ASSESSMENT



## ENVIRONMENT

### E1 - CLIMATE CHANGE

- ▶ Climate change adaptation
- 🕒 Climate change mitigation
- ▶ Energy

### E2 - POLLUTION

- 🕒 Pollution of water
- 🕒 Pollution of living organisms and food resources
- ▶ Substances of concern and very high concern

### E3 - WATER

- 🕒 Water consumption and water withdrawals

### E4 - BIODIVERSITY

- 🕒 Direct impact drivers of biodiversity loss

### E5 - CIRCULAR ECONOMY

- ▶ Resources inflows, including resource use
- 🕒 Waste

### E2 - POLLUTION

- Pollution of air
- Pollution of soil
- Microplastics

### E3 - WATER

- Water discharges
- Marine resources

### E4 - BIODIVERSITY

- Impacts on the state of species
- Impacts on the extent & condition of ecosystems

### E5 - CIRCULAR ECONOMY

- Resources outflows related to products and services

## SOCIAL

### S1 - OWN WORKFORCE

- 🕒 Working conditions
- 🕒 Health and safety
- 🕒 Training and skills development
- 🕒 Diversity and inclusion
- 🕒 Violence and harassment
- 🕒 Collective bargaining and social dialogue
- 🕒 Human rights

### S2 - WORKERS IN THE VALUE CHAIN

- 🕒 Working conditions
- 🕒 Health and safety
- 🕒 Human rights

### S3 - AFFECTED COMMUNITIES

- 🕒 Communities' Economic, Social and Cultural Rights-living conditions

### S4 - CONSUMERS AND END-USERS

- 🕒 Personal safety of consumers and end-users
- 🕒 Data privacy

### S2 - WORKERS IN THE VALUE CHAIN

- Diversity and inclusion
- Violence and harassment
- Social dialogue and collective bargaining
- Training and skills development

### S3 - AFFECTED COMMUNITIES

- Rights of indigenous people
- Communities' Economic, Social and Cultural Rights
- Biodiversity and environment
- Communities' civil and political rights

### S4 - CONSUMERS AND END-USERS

- Information-related impacts for consumers and end-users
- Social inclusion

## GOVERNANCE

### G1 - BUSINESS CONDUCT

- 🕒 Corporate culture
- 🕒 Animal welfare
- ▶ Management of relationships with suppliers
- ▶ Corruption and bribery

### G1 - BUSINESS CONDUCT

- Protection of whistleblowers
- Political engagement and lobbying activities

MATERIAL

NON MATERIAL